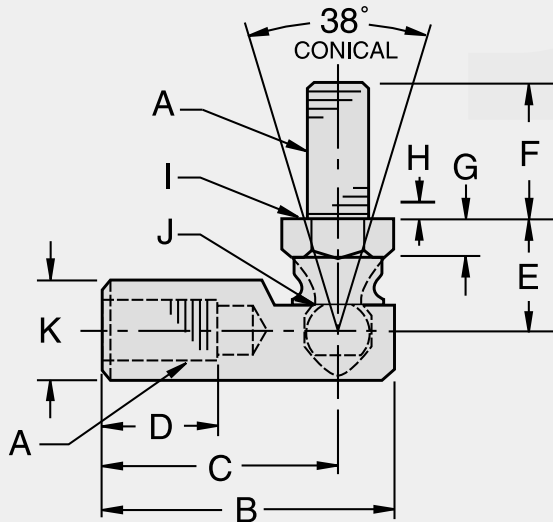


R-G

Ball Joint with Rubber Grommet,
SAE J490/Type G/Style 2



Part Number		A	B	C	D	E	F	G	H	I	J	K	W.F. Width	W.F. Length	Tensile & Shear Strength (Pounds)	Force to Remove Ball Stud (Pounds)
Right Hand	Left Hand	UNF	± .020	± .020	MIN	± .020	± .020	REF	REF	REF	REF	REF				
R103G	R103GLH	10-32	1-1/16	7/8	7/16	7/16	7/16	1/8	1/16	5/16	.172	3/8	5/16	7/32	295	690
R107G	R107GLH	1/4-28	1-7/32	31/32	1/2	15/32	9/16	1/8	3/32	3/8	.193	7/16	3/8	9/32	882	1,005
R108G	R108GLH	5/16-24	1-13/32	1-1/8	9/16	17/32	11/16	5/32	3/32	7/16	.232	1/2	7/16	9/32	1,587	1,282
R109G	R109GLH	3/8-24	1-11/16	1-3/8	3/4	11/16	7/8	3/16	3/32	1/2	.287	5/8	1/2	5/16	2,437	1,900
I3-316	F58-11G	3/8-24	1-11/16	1-3/8	3/4	11/16	5/8	3/16	3/32	1/2	.287	5/8	1/2	5/16	2,437	1,900
R110G	R110GLH	7/16-20	2-3/8	1-15/16	1-1/8	7/8	1-1/8	1/4	1/8	5/8	.412	3/4	5/8	3/8	3,390	2,700
R111G	R111GLH	1/2-20	2-3/8	1-15/16	1-1/8	7/8	1-1/8	1/4	1/8	5/8	.412	3/4	5/8	3/8	3,390	2,700

MATERIALS	
Ball Stud	Body
Low Carbon Steel	Low Carbon Steel
Heat Treated	Zinc Plated
Zinc Plated	Yellow Dichromate Treated
Yellow Dichromate Treated	

NOTE:

1. This series is also available in male to male and female to female configuration. Consult factory.